

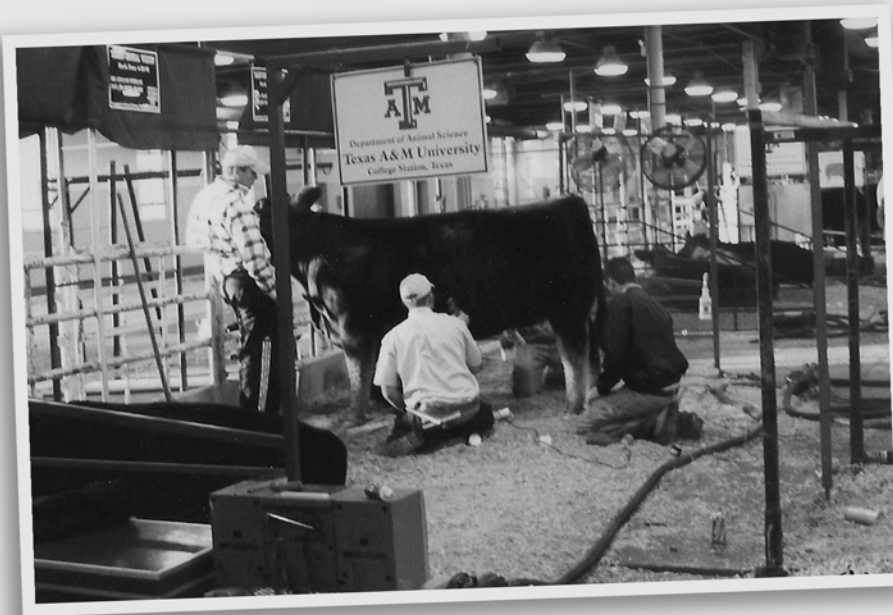
FIRST ANNUAL



# Fit to Finish

## Show Cattle Camp

--December 12-13,  
2009



Learn from the exhibitors and  
judges of *champions!*

Emphasizing clipping, fitting and grooming.  
Learn the skills needed to create your own champion!

December 12-13, 2009

Ages: 8-18

Cost: \$175/participant

\$75/each parent attending

Application deadline: Nov. 30, 2009



For more information:

Mr. Paul Maulsby

beefcenter@tamu.edu

979-862-4736 (office)

979-587-2835 (cell)

<http://animalscience.tamu.edu/workshops/youth-workshops/index.htm>

Check our Web site for further scheduling updates. Click [here](#) to register online.